

QUALITY IRRIGATION
PRODUCTS

ISO 9001:2008 CERTIFIED

2920 Airway Ave, Costa Mesa, Ca. 92626
phone: 714.437.9600 fax: 714.437.9700



FINAL DRIVE GEARBOXES



740 SERIES
WHEEL BOX

740-U 50:1
740-UV 52:1

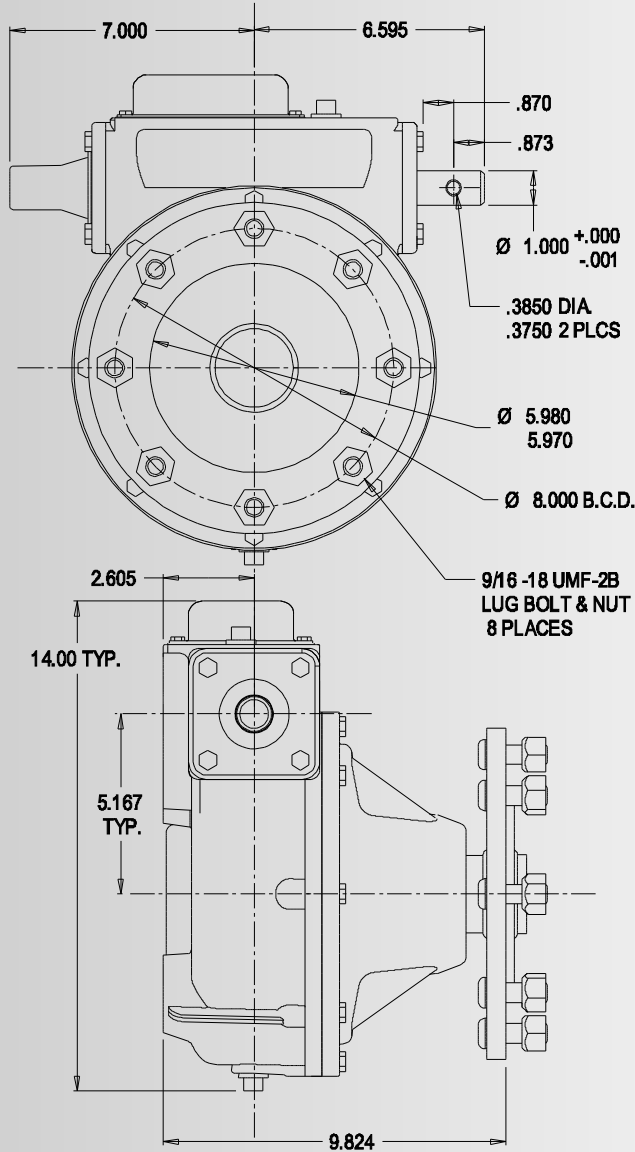
Evaluation Specification:

- & Cartridge seals standard.
- & Larger input bearings and reinforced housing.
- & Stainless steel expansion chamber.
- & Universal mount bolt pattern.
- & Full cycle expansion chamber; bellows-type expansion diaphragm.
- & Tapered roller bearings.
- & 50:1 worm gear ratio, UV 52:1 : Various over-hung load capacities.
- & High strength cast iron bolt-on end caps.
- & Input and output shafts fitted with external UV resistant dust seals.
- & Includes rib neck carriage bolts with wheel nuts.
- & Each gearbox filled with extreme pressure, multi-purpose gear oil.
- & Top oil fill provision.
- & High strength steel worm and output shaft.
- & Input shaft guard included.

CONTACT UMC AT SALES@UMCPRODUCTS.COM

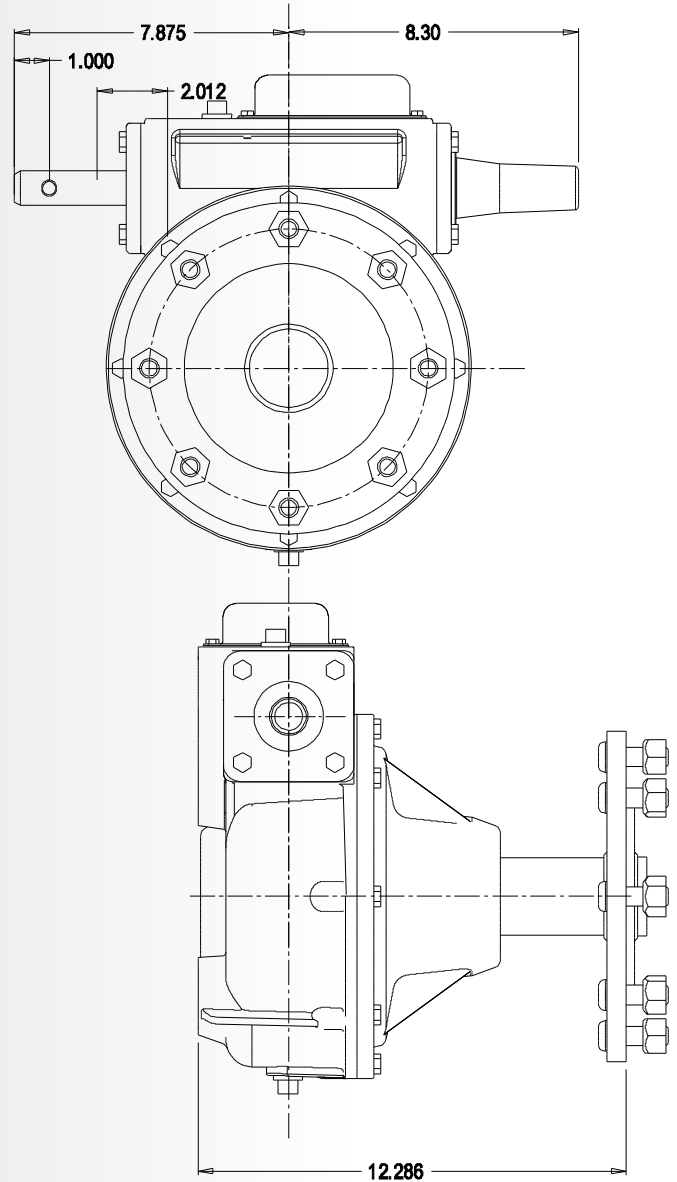
Dimensional Drawing
FINAL DRIVE GEARBOXES

Model: 740-U



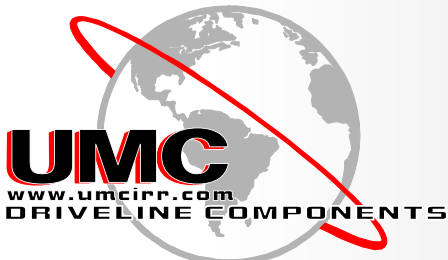
Universal mounting bolt pattern fits most Lindsay, Reinke, and Lockwood systems.

Model: 740-UV



Mounting bolt pattern fits Valmont systems.

CONTACT UMC AT SALES@UMCPRODUCTS.COM



Universal Motion Components, Co. Inc.
 2920 Airway Ave, Costa Mesa, Ca. 92626
 Phone: 714.437.9600 Fax: 714.437.9700
 Web: <http://www.umcproducts.com>
 E-mail: sales@umcproducts.com