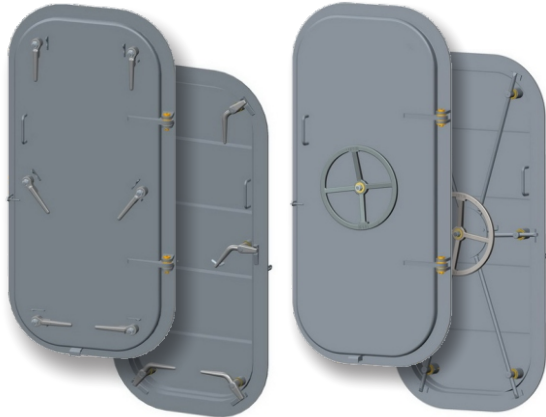


DOORS

4 DOG / 6 DOG / QUICK ACTING



4 DOG DOORS - LH/RH

WTD-4D-26x54	06111-101A/B
WTD-4D-26x60	06111-101C/D

6 DOG DOORS - LH/RH

WTD-6D-26x60	06121-101C/D*
WTD-6D-30x60	06121-101E/F*
WTD-6D-30x66	06121-101G/H*
WTD-6D-30x72	06121-101I/J*

QUICK ACTING DOORS - LH/RH

WTD-QA-26x60	06122-101C/D*
WTD-QA-30x60	06122-101E/F*
WTD-QA-30x66	06122-101G/H*
WTD-QA-30x72	06122-101I/J*

GASKETS

06111-701A	26 x 54	QA, 4D, 6D - BUNA N
06111-701B	26 x 60	QA, 4D, 6D - BUNA N
06111-701C	30 x 60	QA, 4D, 6D - BUNA N
06111-701D	30 x 66	QA, 4D, 6D - BUNA N
06111-701E	30 x 72	QA, 4D, 6D - BUNA N

PARTS	DOOR DOG KIT
	Handles, Washers, Packing and Bolt STEEL HANDLES
	Right Hand Kit 08340-101A
	Left Hand Kit 08340-101B
	ALUMINUM
	Right Hand Kit 03840-115A
	Left Hand Kit 03840-115B

HANDWHEELS	HINGE PIN KIT - ALL STYLES
Counter / Outside 06122-301B	Pin, Zerk & Washers 06122-140A
Clockwise / Inside 06122-301A	

QA ARM LENGTH KIT
06122-130A - 11.38"
06122-130B - 13.38"
06122-130C - 28.61"
06122-130D - 29.28"
06122-130E - 32.10"
06122-130F - 34.96"
06122-130G - 16.30"
06122-130H - 10.30"
06122-130K - 13.30"

DECK HARDWARE

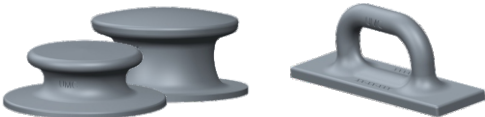
KEVEL CHOCKS / BITTS / CHOCKS / D-RINGS



DOUBLE BITTS
UMC-2 8" 0111-301A
UMC-40 10" 01120-301A

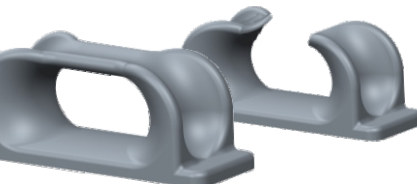
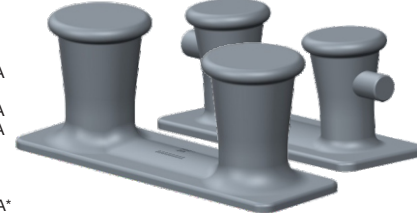
W/Horns
UMC-2A 8" 04200-101A
UMC-40A 10" 03760-101A

KEVEL CHOCKS* / 24" / 30" / 36" / 42" / 48"
 UMC-30 029920-301A* / UMC-KC30 01081-301A* / UMC-482 010180-301A*
 UMC-483 01090-301A* / UMC-484 01100-301A*
KEVELS 18" / 60" UMC-518 02720-301A / UMC-KC60 01101-301A
LARGE BASE CLEATS / 16" / 14" / 12" / 10" / 8"
 08721-301A / 302A / 303A / 304A / 305A / 306A



BUTTON CHOCKS / 6" / 8" / 9" / 10" / 12"
 UMC-192 01160-301A / UMC-473 01180-301A / UMC-194 07990-301A
 UMC-185 01170-301A / UMC-158A 07830-40A FABRICATED
D-RINGS UMC-196 01190-301A

SWL WORKING LOADS AVAILABLE ON REQUEST

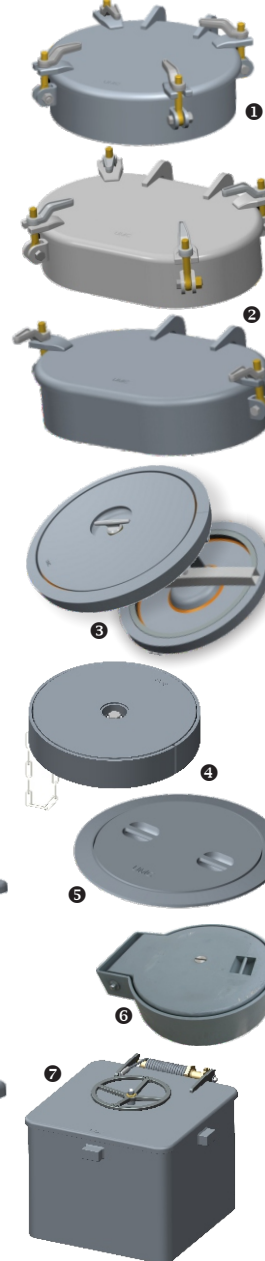


CHOCKS: CLOSED / 6" / 9" / 12" / 14"
 UMC-480 04610-301A / UMC-490 06240-301A /
 UMC-497 06241-302A / UMC-14 06241-301A
CHOCKS: OPEN / 9" / 12"
 UMC-485 07870-301A / UMC-489 06242-301A



HATCHES

MULTI DOG / T-BOLT / SCUTTLE / SINGLE BOLT / TWIST LOCK



ROUND - 12" & 19" MULTI-DOG ①			Flame Screen	Clear Opening
UMC-456-5	03410-101A	12" 3 Dog 5" Coaming	03410-201A	12" Ø x 5"
UMC-343-5	01230-101A	19" 4 Dog 5" Coaming		19" Ø x 5"

OVAL 15X23 MULTI-DOG* ②				Hardware / Material / Coaming Matrix
UMC-174 4-Dog 01240-110#	Standard Hardware	Premium Hardware	All Stainless	15" x 23"
	Steel Hatch	Steel Hatch	SS Cover & Coaming	
Flame Screen 01240-215A	Steel Dog	SS Dog w/ Zerk	Bronze Dog	15" x 23"
OVAL 18X24 MULTI-DOG* ③	SS Bolts/Nuts	SS Tumble Bolt	Bronze Tumble	18" x 24"
	UMC-464 4-Dog 03800-100#	SS Bolts/Nuts	SS Bolts/Nuts	
Flame Screen 03800-215A	5" Coaming	A*	B*	C*
	12" Coaming	D*	E*	F*
	24" Coaming	G*	H*	J*

UMC-174 / 774 / 464 hatches have removable stainless steel hinge pins - Welded pins special order

SPARE PARTS			
Dog Arms	Gaskets	Hinge Pin Kits	
Steel 01240-302A	12" RND DF-456 03410-701A	19" RND DF-343	01230-160A
Bronze 01240-302B	19" RND DF-343 01241-701A	15x23" DF-174, 774	01240-160A
Stainless Steel 01240-302C	15x24" DF-174, 774 01241-701A	18x24" DF-464	03800-160A
Steel w/ Zerk 01240-125A	18x24" DF-464 03800-701A		
S.S. w/ Zerk 01240-125C	Tumble Bolts	Lug Hardware - S.S.	
	Bronze 5" 01240-201A	Bolt 5/8-11 x 2 1/4" 01240-801B	
	Stainless 5" 01240-201B	Nut 5/8-11 01241-804A	

ROUND - T-BOLT* ④		Galvanized	Stainless Steel	Clear Opening
UMC-430-18	01210-101A* 18" T-Bolt Hatch	01210-101B*	01210-101S*	18" Ø
UMC-430-24	01220-101A* 24" T-Bolt Hatch	01220-101B*	01220-101S*	24" Ø

SPARE PARTS		Gaskets	Replacement Covers	
T-Bolt Hardware	18" O-Ring 01210-702A	24" O-Ring 01220-701A	18" PAINTED	04210-101A
T-Bolt Kit 04210-110A			18" GALVANIZED	04210-101B
SS T-Handle 01210-201A			24" PAINTED	01220-102A
Bronze Nut 01210-803A			24" GALVANIZED	01220-102B
Nitrile Wash 01210-701A				
Bronze Wash 01210-801A			Strongbacks	
SS Cotter Pin 01210-802A			18" Strongback	01210-202A
			24" Strongback	01220-220A

ROUND - SINGLE BOLT ⑤		Gasket / CB Gasket	Clear Opening
UMC-540-20	08380-101A 20" Single Bolt w/ chain	08380-701A	20" Ø
UMC-540-22	08381-101A 22" Single Bolt w/ chain	08381-701A / 702A	22" Ø

ROUND - TWIST LOCK ⑥		Gasket	Clear Opening
UMC-474	08640-101A Flush Mounting	08640-701A	18.6" Ø
UMC-474	08641-101A w/ 5" Coaming		18.6" Ø x 5"

FLUSH ROUND SCUTTLE HATCH ⑦		Clear Opening
UMC-551	06122-110A 20" Flush Watertight Quick Acting Escape Hatch	20" Ø

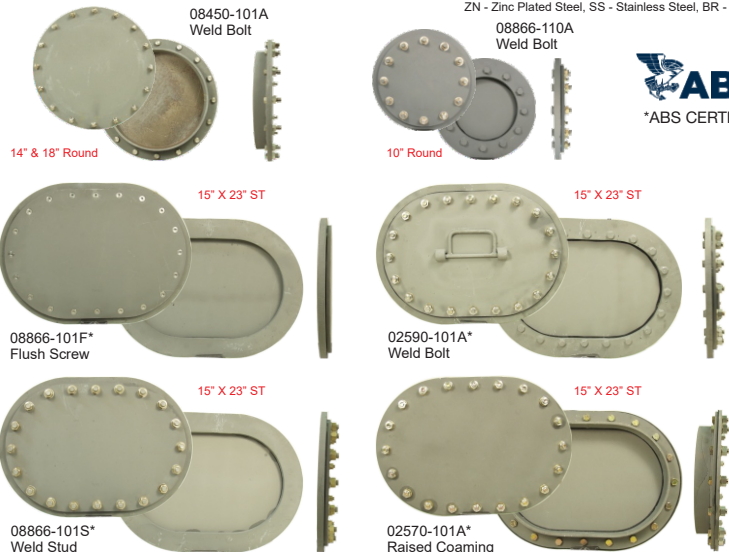
RAISED SQUARE SCUTTLE HATCH ⑧		Clear Opening
UMC-615-2424	06122-111A Raised Scuttle 24" x 24" w/ 24" Coaming	24" x 24"
UMC-615-3030	06122-112A Raised Scuttle 30" x 30" w/ 24" Coaming	30" x 30"
UMC-615-3636	06122-113A Raised Scuttle 36" x 36" w/ 24" Coaming	36" x 36"

MANHOLES

FLUSH & RAISED / ROUND & OVAL / 20 BOLT / 26 BOLT / VARIOUS MOUNT STYLES

PART NUMBER	MODEL # REFERENCE	STYLE	BOLT THREAD	BOLT LENGTH	OPENING W x L (IN)	OVERALL W x L (IN)	C (IN)	D (IN)	E (IN)	WGHT (LBS)	BOLT STUD	NUT	WASH ER	GASK ET	HNDL Y/N
15" x 23"	20 Bolt Flush														
02590-101A*	UMC-503	WELD BOLT	5/8-11	2.25	15 x 23	21 x 29	.393	.787	N/A	95	ZN	SS	BR	BUNA	Y
02590-105A*	UMC-503-SS	WELD BOLT	5/8-11	2.25	15 x 23	21 x 29	.393	.787	N/A	95	SS	BR	BR	BUNA	Y
08866-101D	BMHC15X23D	TAP RING	3/4-10	1.375	15 x 23	21 x 29	.393	.787	N/A	102	SS	SS	SS	BUNA	N
08866-101F	BMHC15X23F	FLUSH SCREW	1/2-13	.9375	15 x 23	21 x 29	.393	.787	N/A	98	SS			BUNA	N
08866-101S	BMHC15X23S	STUD WELD	3/4-10	2.25	15 x 23	21 x 29	.393	.787	N/A	104	SS	BR	SS	BUNA	N
15" x 23"	w/ 3" NPT	20 Bolt Flush	3" NPT	PLUG											
BMHC15X23Z		RAISED PLUG	3/4-10	2.25	15 x 23	21 x 29	.393	.787	N/A	125	SS	BR	SS	BUNA	N
15" x 23"	26 Bolt Flush														
02610-101A*	UMC-505	FLUSH SCREW	5/8-11	1.25	15 x 23	22 x 30	.51	1.125	N/A	160	SS			BUNA	N
02590-102SA*		TAP RING	5/8-11	1	15 x 23	21 x 29	.393	.787	N/A	95	SS	BR	BR	BUNA	N
15" x 23"	20 Bolt Raised														
02570-101A*	UMC-501	NON WELD	5/8-11	1.75	15 x 23	20 x 28	.393	.375	2.5	85	ZN	SS	BR	BUNA	N
02570-105A*		NON WELD	5/8-11	1.75	15 x 23	20 x 28	.393	.375	4	95	SS	BR	BR	BUNA	N
18" x 24"	24 Bolt Flush														
02600-101A*	UMC-504	WELD BOLT	5/8-11	2.25	18 x 24	24 x 30	.393	.787	N/A	112	ZN	ZN	BR	BUNA	Y
18" x 24"	24 Bolt Raised														
02580-101A*	UMC-502	NON-WELD	5/8-11	1.75	18 x 24	23 x 29	.393	.375	2.5	106	ZN	SS	BR	BUNA	N
18" Round	Raised														
08450-101A	UMC-154-18	NON WELD	5/8-11	2	18 x 18	23 x 23	.393	.393	2.5	78	ZN	BR		BUNA	N
14" Round	Raised														
08451-101A	UMC-154-14	NON WELD	5/8-11	2	14 x 14	19 x 19	.393	.393	2.5	55	ZN	BR		BUNA	N
10" Round	12 Bolt Flush														
08866-110A	WELD BOLT		5/5-11	2.25	10 x 10	16 x 16	.393	.787	N/A	48	SS	BR	SS	BUNA	N

ZN - Zinc Plated Steel, SS - Stainless Steel, BR - Brass/Bronze



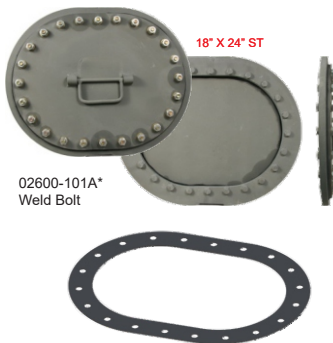
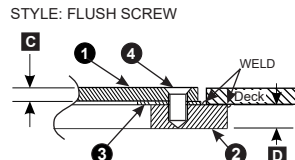
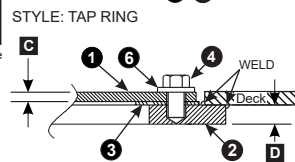
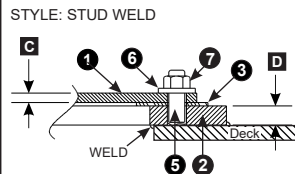
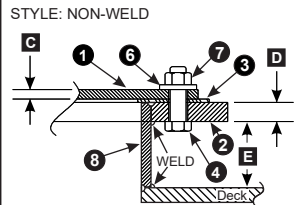
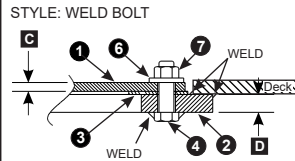
GASKETS 15x23
 02570-701A 20 Bolt 5/8 Holes
 02590-701A 26 Bolt 5/8 Holes
 08866-702A 20 Bolt 3/4 Holes
 02570-701C 20 Bolt 3/4\" Holes

GASKETS 18x24
 02570-701B 24 Bolt 3/4\" Holes
 02580-701A 24 Bolt 3/4\" Holes

GASKETS ROUND
 08451-701A 14\" Round
 08866-710A 10\" Round
 ALL GASKETS ARE BUNA-N

BILL OF MATERIAL: BMHC

PC.NO.	DESCRIPTION	MATERIAL
1	COVER	STEEL (PRIMED)
2	DECK RING	STEEL (PRIMED)
3	GASKET	SEE MATRIX
4	BOLT	SEE MATRIX
5	STUD	SEE MATRIX
6	WASHER	SEE MATRIX
7	NUT	SEE MATRIX
8	COAMING	STEEL (PRIMED)

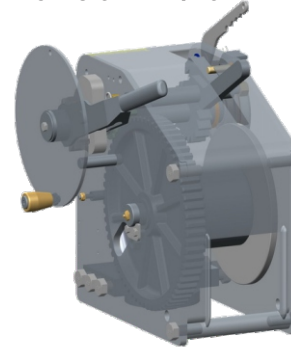


UMC MARINE | A division of Universal Motion Components
 INNOVATION | QUALITY | DESIGN
 www.umcmarine.com 714/437-9600



WINCHES

BC-40 STYLE / SWIVEL BASE / WELD-DOWN / D-RING



UMC BC-40 BARGE CONNECTOR WINCH

SWIVEL BASE
 08321-105R - RIGHT HANDED
 08321-105L - LEFT HANDED

WELD-DOWN
 08321-114R - RIGHT HANDED
 08321-114L - LEFT HANDED

D-RING
 08321-106R - RIGHT HANDED
 08321-106L - LEFT HANDED



Brake Hardware
 Brake Band 08303-463C
 Brake Drum 08321-235A
Grease Fittings
 Zerk 1/8-27 06140-701A
 Zerk 1/4-18 08303-820A

Rope clips
 U-Bolt 08303-217C
 2x Nut 3/4-10 03570-806A
Replacement Covers
 Left Hand 08321-415B
 Right Hang 08321-415A

Handwheel Knob
 Knob 08303-251A
 Shoulder Bolt 08303-837A
 Jam Nut M16-2 08308-846A
 Cotter Pin 08303-805A

DM-40 3-SHAFT STYLE / SWIVEL BASE

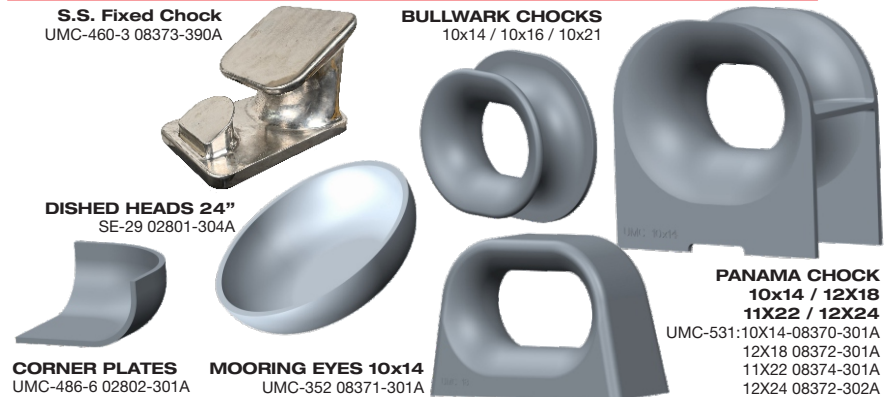
UMC DM-40 BARGE CONNECTOR WINCH

08322-122A - RIGHT HANDED
 08322-122B - LEFT HANDED

OTHER

S.S. Fixed Chock
 UMC-460-3 08373-390A

BULLWARK CHOCKS
 10x14 / 10x16 / 10x21



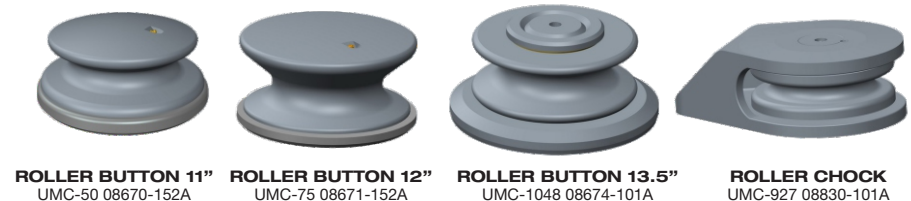
DISHED HEADS 24"
 SE-29 02801-304A

CORNER PLATES
 UMC-486-6 02802-301A

MOORING EYES 10x14
 UMC-352 08371-301A

PANAMA CHOCK
 10x14 / 12X18
 11X22 / 12X24
 UMC-531:10X14-08370-301A
 12X18 08372-301A
 11X22 08374-301A
 12X24 08372-302A

ROLLERS CHOCKS



ROLLER BUTTON 11"
 UMC-50 08670-152A

ROLLER BUTTON 12"
 UMC-75 08671-152A

ROLLER BUTTON 13.5"
 UMC-1048 08674-101A

ROLLER CHOCK
 UMC-927 08830-101A