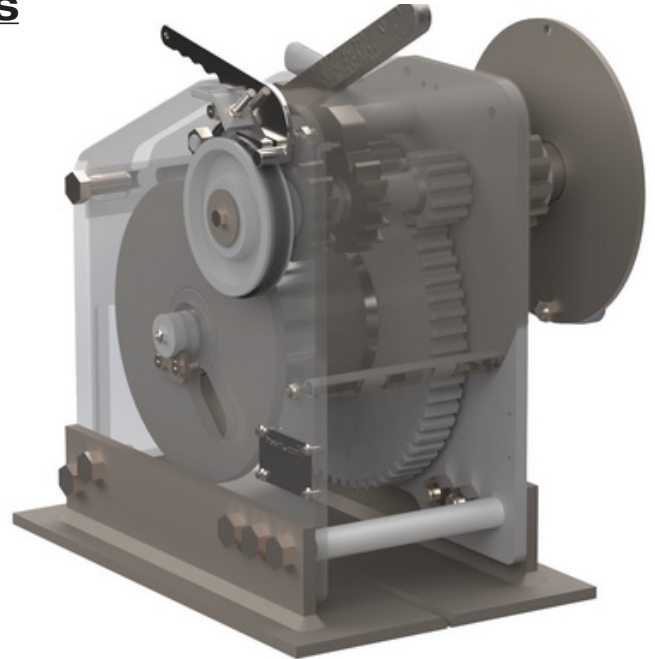


UMC BC-40 BARGE CONNECTING WINCHES

UMC's barge connecting winches have been trusted across North and South America for decades. Built from premium materials and engineered for long-lasting, trouble-free operation, these winches are purpose-built for secure barge coupling using wire rope. Typically installed on the port and starboard fore and aft barge corners, UMC winches deliver reliable performance in the most demanding marine environments. Contact us today to find the right winch for your specific application.

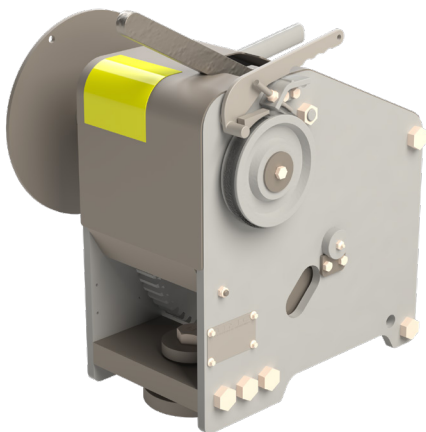
Features

- Proven 40-ton holding capacity ensures secure barge connections in demanding marine conditions
- Precision double-dog ratchet design delivers industry-leading resolution for superior final tensioning
- Large ratchet lever provides maximum leverage for controlled tensioning
- Hand-operated brake lever allows for smooth, controlled load release
- Hand wheel with spinner knob enables rapid slack take-up and positioning
- Easy-off single fastener hand wheel allows for quick removal and maintenance access
- Front-mounted cable guard ensures proper cable alignment during operation
- Durable machine-cut gearing features a heat-treated steel pinion and cast steel driven gear for long service life
- Bronze shaft bushings provide long-lasting wear resistance and smooth operation
- Easy-access grease zerk fittings allow for convenient lubrication of shaft bushings, dogs, and dog release lever
- Hot-dip galvanized finish provides exceptional corrosion protection in harsh marine environments
- Compact, low-profile design conserves valuable deck space
- Fully enclosed drum and gearing enhance operator safety and protect components from the elements
- Open-bottom design allows for easy cleanup of debris and water, reducing maintenance downtime

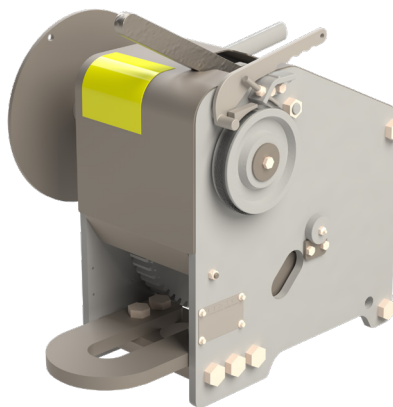


Right Hand Version Shown Here

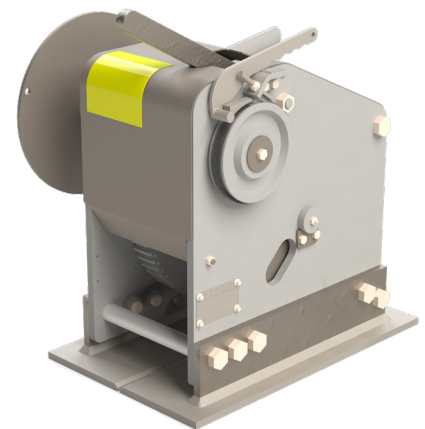
Holding Dog / Brake Capacity (Tons)	Typical Line Tension - Ratchet (Lbs)	Drum Flange Diameter (In)	Drum Dimensions (In)		Drum Capacity (Ft)		
40	10,000	14	OD	Width	3/4"	7/8'	1"
			7	6.68	96	85	70



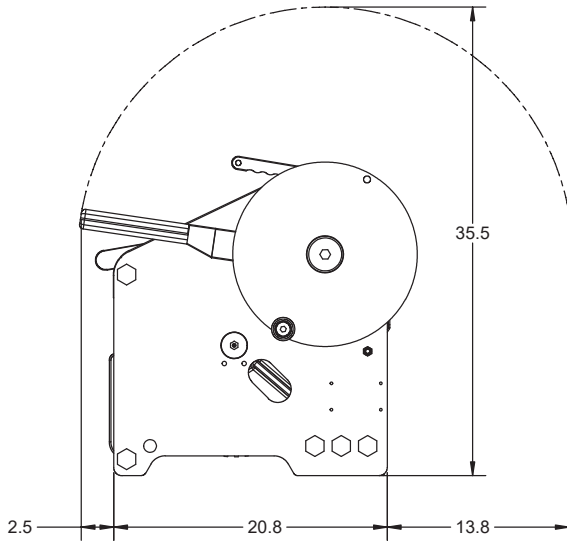
Model: UMC-BC-40-DD-S Swivel Base
 Right Hand 08321-105R 439 lbs
 Left Hand 08321-105L 439 lbs



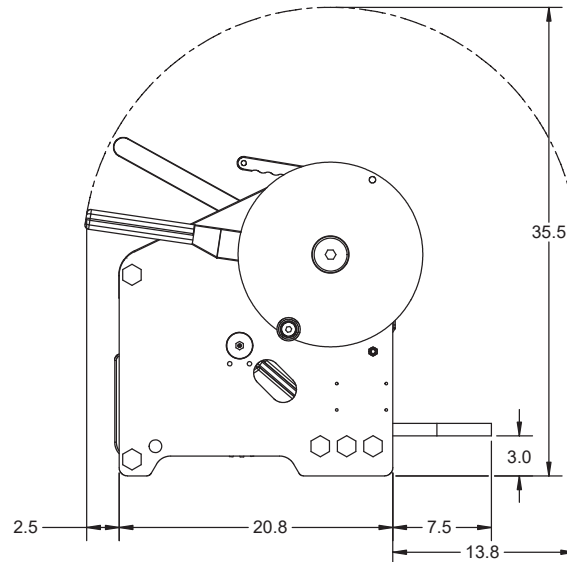
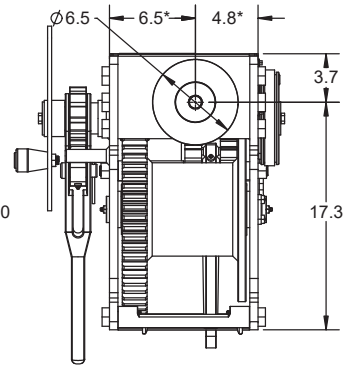
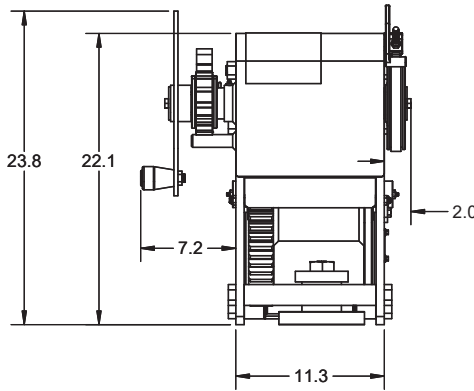
Model: UMC-BC-40-DD-DR D-Ring
 Right Hand 08321-106R 442 lbs
 Left Hand 08321-106L 442 lbs



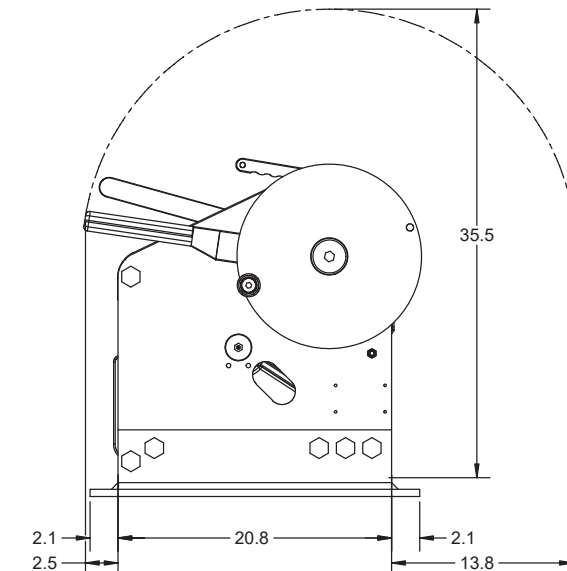
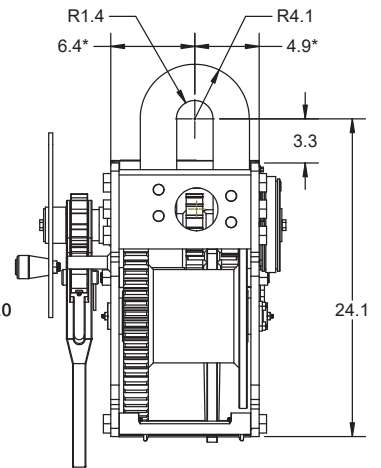
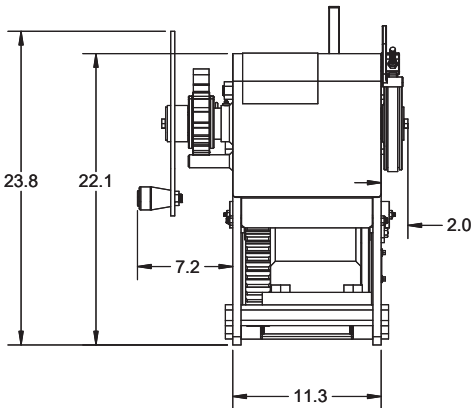
Model: UMC-BC-40-DD-WDP Weld Down
 Right Hand 08321-114R 504 lbs
 Left Hand 08321-114L 504 lbs



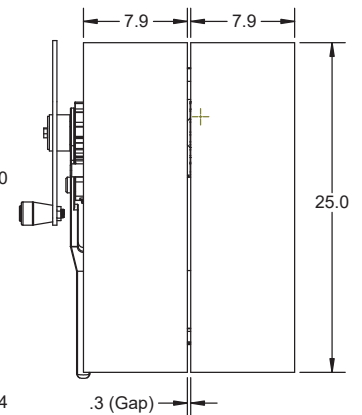
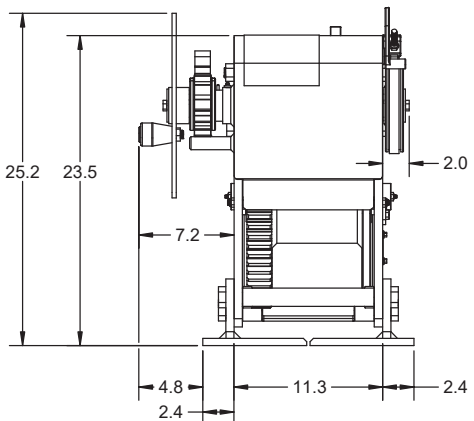
Model: UMC-BC-40-DD-S Swivel Base
 Right Hand 08321-105R 439 lbs
 Left Hand 08321-105L 439 lbs



Model: UMC-BC-40-DD-DR D-Ring
 Right Hand 08321-106R 442 lbs
 Left Hand 08321-106L 442 lbs



Model: UMC-BC-40-DD-WDP Weld Down
 Right Hand 08321-114R 504 lbs
 Left Hand 08321-114L 504 lbs



Dimensions marked with an asterisk (*) are left hand/right hand sensitive.
 Dimensions' value are the same but on opposite sides between left hand/right hand.