

## Double Bitts | 8", 10" | Cast Steel

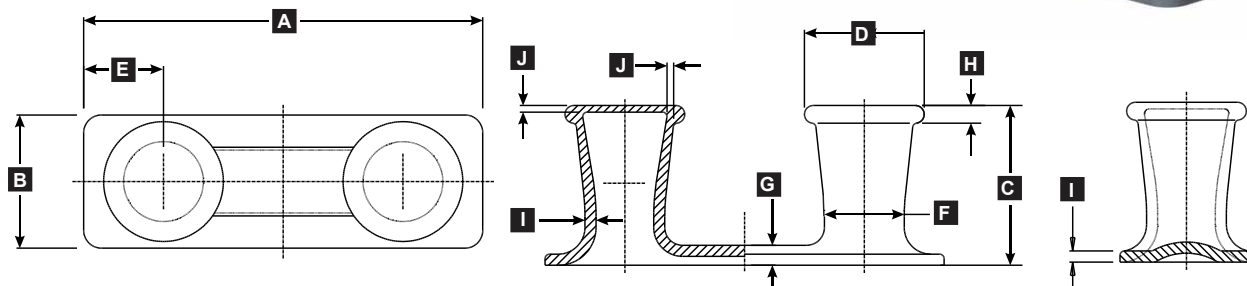
## UMC-2, UMC-40

UMC offers a wide range of Double Bitts for any deck application. Sizes range from a minimum bollard diameter of 6" weighing 150lbs up to a bollard diameter of 14" weighing nearly 1600lbs. Our Double Bitts are made from ASTM A27 cast steel and are built to withstand the toughest conditions. Our 8", 10", and 12" models are also available with horns.

Double Bitts are designed primarily to be used with line or wire for barge coupling, checking, or mooring. They are typically placed at the starboard and port corners of the bow and stern of a barge and along the gunnels of a push-boat/ tow-boat.

ASTM A27-70-36 Cast Steel

UMC's Double Bitts are sold as-cast with no surface paint or finish to maintain quick, easy and safe weld-ability to the deck of any barge or workboat.



Model	Desc.	Part Number	A in. (mm)	B in. (mm)	C in. (mm)	D in. (mm)	E in. (mm)	F in. (mm)	G in. (mm)	H in. (mm)	I in. (mm)	J in. (mm)	SWL (ton)	Weight Lbs. (Kgs)
UMC-2	8" Double Bitt	01110-301A	40" (1016)	14" (336)	16" (406)	11" Ø (279)	8" (203)	7" Ø (177)	2" (51)	2" (51)	1.25" (32)	.72" (18)		320 (145)
UMC-40	10" Double Bitt	01120-301A	45" (1143)	15" (381)	18" (457)	13.5" Ø (343)	9" (228)	9" Ø (57)	2.25" (51)	2" (51)	1.25" (32)	.75" (19)		574 (260)

## Double Bitts With Horns | 8", 10", 12" | Cast Steel

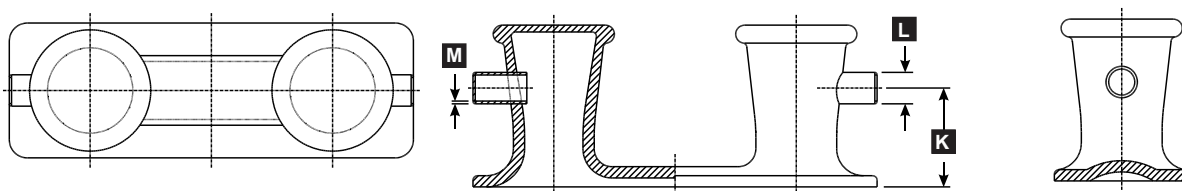
## UMC-2A, UMC-40A, UMC-491A

UMC offers a wide range of Double Bitts for any deck application. Sizes range from a minimum bollard diameter of 6" weighing 150lbs up to a bollard diameter of 14" weighing nearly 1600lbs. Our Double Bitts are made from ASTM A27 cast steel and are built to withstand the toughest conditions. Our 8", 10", and 12" models are also available with horns.

Double Bitts are designed primarily to be used with line or wire for barge coupling, checking, or mooring. They are typically placed at the starboard and port corners of the bow and stern of a barge and along the gunnels of a push-boat/ tow-boat. Additionally, the Horns featured on these Double Bitts prevent line or wire from "riding up" the bollard during a tow as well as allow for easy and controlled checking.

ASTM A27-70-36 Cast Steel

UMC's Double Bitts are sold as-cast with no surface paint or finish to maintain quick, easy and safe weld-ability to the deck of any barge or workboat.



Model	Desc.	Part Number	Notes	K in. (mm)	L in. (mm)	M in. (mm)	SWL (ton)	Weight Lbs. (Kgs)
UMC-2A	8" Double Bitt w/ Horns	04200-301A	SEE DIMENSIONS FOR UMC-2 ABOVE	10" (254)	3.5" Ø (89)	.3" (8)		331 (150)
UMC-40A	10" Double Bitt w/ Horns	03760-301A	SEE DIMENSIONS FOR UMC-40 ABOVE	11" (279)	3.5" Ø (89)	.3" (8)		579 (262)

## Double Bitts | 12", 14" | Cast Steel

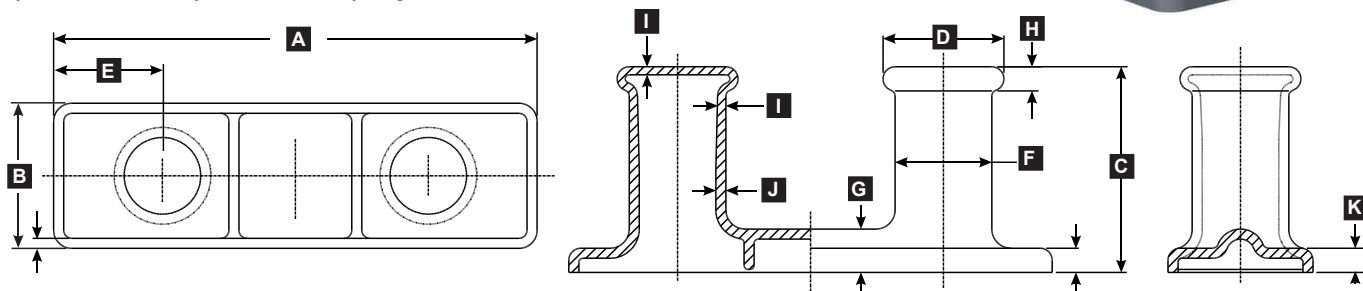
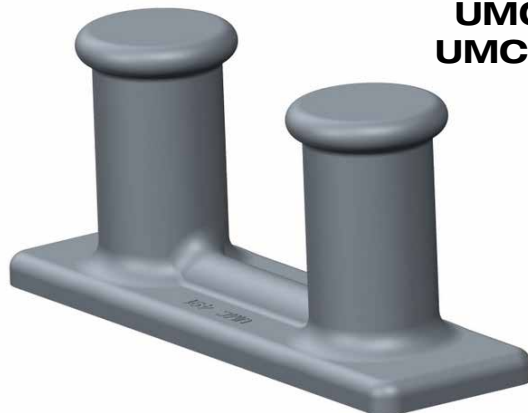
UMC offers a wide range of Double Bitts for any deck application. Sizes range from a minimum bollard diameter of 6" weighing 150lbs up to a bollard diameter of 14" weighing nearly 1600lbs. Our Double Bitts are made from ASTM A27 cast steel and are built to withstand the toughest conditions. Our 8", 10", and 12" models are also available with horns.

Double Bitts are designed primarily to be used with line or wire for barge coupling, checking, or mooring. They are typically placed at the starboard and port corners of the bow and stern of a barge and along the gunnels of a push-boat/ tow-boat.

ASTM A27-70-36 Cast Steel

UMC's Double Bitts are sold as-cast with no surface paint or finish to maintain quick, easy and safe weld-ability to the deck of any barge or workboat.

**UMC-491,  
UMC-DB14**



Model Number	Desc.	Part Number	A in. (mm)	B in. (mm)	C in. (mm)	D in. (mm)	E in. (mm)	F in. (mm)	G in. (mm)	H in. (mm)	I in. (mm)	J in. (mm)	K in. (mm)	SWL (ton)	Weight Total Lbs (Kgs.)
UMC-491	12" Double Bitt	05970-301A	60" (1524)	18" (457)	25.5" (647)	15" Ø (381)	13.5" (343)	12" Ø (305)	5.4" (137)	3" (83)	1" (25)	1.25" (32)	3" (76)		1045 (474)
UMC-DB14	14" Double Bitt	01121-301A	66" (1676)	21" (533)	26.25" (667)	17.5" Ø (445)	13" (343)	14" Ø (356)	5.7" (145)	3.5" (89)	1" (25)	1.5" (38)	3.5" (89)		1596 (724)

## Double Bitts | 12", 14" | Cast Steel

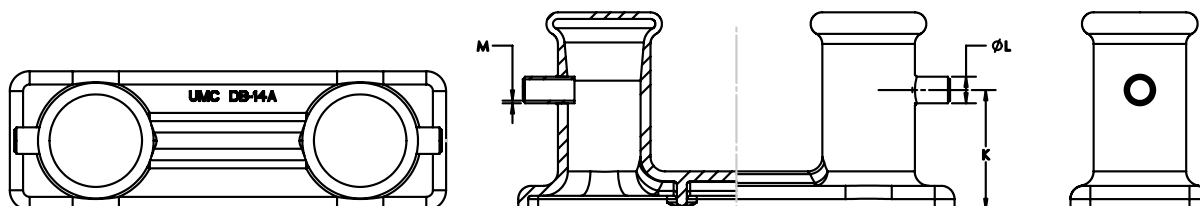
UMC offers a wide range of Double Bitts for any deck application. Sizes range from a minimum bollard diameter of 6" weighing 150lbs up to a bollard diameter of 14" weighing nearly 1600lbs. Our Double Bitts are made from ASTM A27 cast steel and are built to withstand the toughest conditions. Our 8", 10", and 12" models are also available with horns.

Double Bitts are designed primarily to be used with line or wire for barge coupling, checking, or mooring. They are typically placed at the starboard and port corners of the bow and stern of a barge and along the gunnels of a push-boat/ tow-boat.

ASTM A27-70-36 Cast Steel

UMC's Double Bitts are sold as-cast with no surface paint or finish to maintain quick, easy and safe weld-ability to the deck of any barge or workboat.

**UMC-491A,  
UMC-DB14A**



Model	Desc.	Part Number	Notes	K in. (mm)	L in. (mm)	M in. (mm)	SWL (ton)	Weight Lbs. (Kgs.)
UMC-491A	12" Double Bitt w/ Horns	05971-301A	SEE DIMENSIONS FOR UMC-491 ABOVE	16" (406)	3.5" Ø (89)	.3" (7.6)		1000 (454)
UMC-DB14A	14" Double Bitt w/ Horns	01123-301A	SEE DIMENSIONS FOR UMC-DB14 ABOVE	18" (457)	4.02" Ø (102)	.394" (10)		1617 (733)

## UMC-SB-8B - 8" Single Bitt, Square Base | Cast Steel

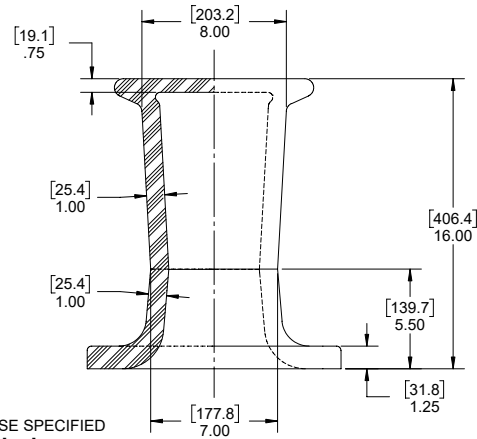
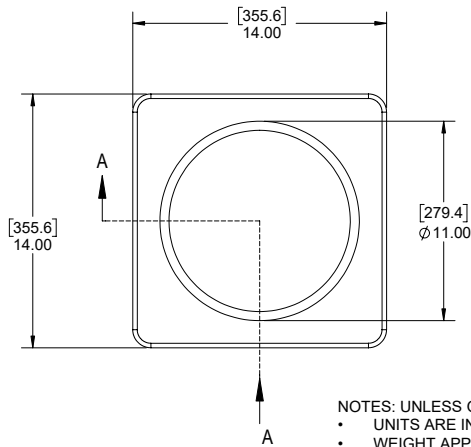
**UMC-SB-8B**  
**01131-301A**

UMC offers a wide range of Single Bitts for any deck application. Our Single Bitts are made from ASTM A27 cast steel and are built to withstand the toughest conditions.

Single Bitts are designed primarily to be used with line or wire for barge coupling, checking, or mooring. They are typically placed at the starboard and port corners of the bow and stern of a barge and along the gunnels of a push-boat/ tow-boat.

ASTM A27-70-36 Cast Steel

UMC's Single Bitts are sold as-cast with no surface paint or finish to maintain quick, easy and safe weld-ability to the deck of any barge or workboat.



NOTES: UNLESS OTHERWISE SPECIFIED  
• UNITS ARE IN INCHES [mm].  
• WEIGHT APPROX. 170 lbs (77 kg).

SECTION A-A

## Single Bitts | 8", 10" | Cast Steel

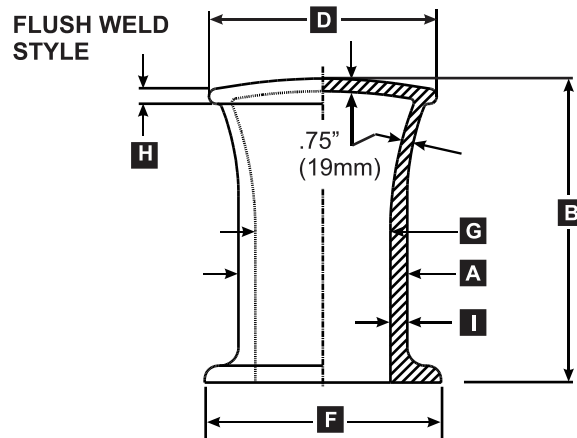
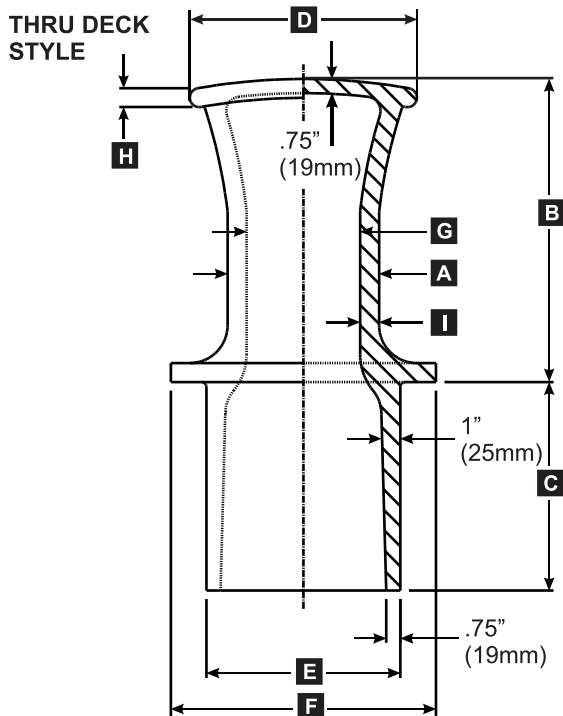
Universal Single Bitts.

ASTM A27-70-36 Cast Steel



Model Number	Description	Autocad PDF/DXF	Part Number	Weight Total Lbs (Kgs.)
UMC-492	8" Square Base Thru-Deck Single Bitt (Heavy Duty)		03720-301A	370 (168)
UMC-530	8" Round Base Thru-Deck Single Bitt		08000-301A	260 (118)
UMC-SB10T	10" Round Base Thru-Deck Single Bitt		01142-301A	292 (132)
UMC-SB10	10" Round Base Flush-Weld Single Bitt		01140-301A	190 (86)

## Single Bitts ASTM A27-70-36 Cast Steel



MODEL	DESCRIPTION	STYLE	PART #	DIMENSIONS IN INCHES (MM)									LBS (KGS)
				A	B	C	D	E	F	G	H	I	
UMC-492	SINGLE BITT 8" SQUARE BASE	THRU DECK HEAVY DUTY	03720-301A	8" Ø (203)	21" (533)	12" (305)	12" Ø (305)	9.63" Ø (245)	14" (356)	5" Ø (127)	1" (25)	1.5" (38)	370 (168)
UMC-530	SINGLE BITT 8" ROUND BASE	THRU DECK	08000-301B	8" Ø (203)	16" (406)	11" (279)	12" Ø (305)	10.25" Ø (260)	14" Ø (356)	6" (152)	1" (25)	1" (25)	260 (117)
UMC-SB10-T	SINGLE BITT 10" ROUND BASE	THRU DECK	01142-301A	10" Ø (254)	18" (457)	12" (305)	13.5" Ø (343)	10" Ø (254)	14" Ø (356)	8" (203)	1.46" (37)	1" (25)	293 (132)
UMC-SB10	SINGLE BITT 10" ROUND BASE	FLUSH WLD	01140-301A	10" Ø (254)	18" (457)	N/A	13.5" Ø (343)	N/A	14" Ø (356)	8" (203)	1.46" (37)	1" (25)	190 (86)

UMC Marine | A division of Universal Motion Components Co., Inc.

EMAIL US  
sales@umcmarine.com

VISIT US ONLINE  
umcmarine.com

CALL US  
714 437 9600

FAX US  
714 437 9700

January 20, 2026 12:49 PM