

# Raised Watertight Hatches



## 2-Dog Oval

Raised watertight hatches are strong and secure enclosures designed to be easily accessed when needed. They are universally used on all types of commercial vessels from tank barges, hopper barges, box barges and push-boats to OSVs and larger commercial vessels. Their simple design and quality steel construction help them meet long range trouble-free service requirements in the harshest environments.

### Features

- Gasket - Nitrile Rubber
- Removable Hinge Pins
- Available with 12" Coaming & 24" Coaming
- All of our raised watertight hatches meet ABS (American Bureau of Shipping) requirements for design and materials.

Raised watertight hatches are typically found along the gunnels of a barge as well as on the bow/ stern and on top of cargo compartments or tanks. They are used to access wing tanks, the rake compartment, cargo compartments etc. for venting, filling, and inspecting.

Steel (ASTM A36)  
Painted Primer Grey

Other gasket material available upon request.

Various hardware options available:

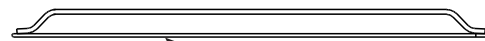
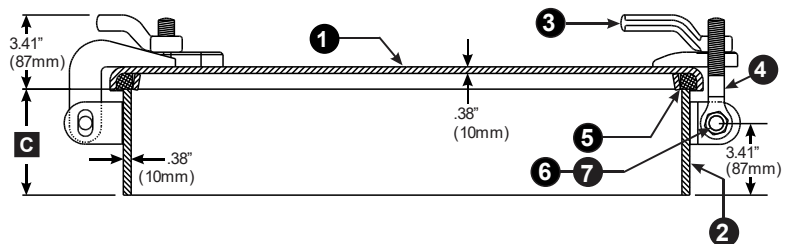
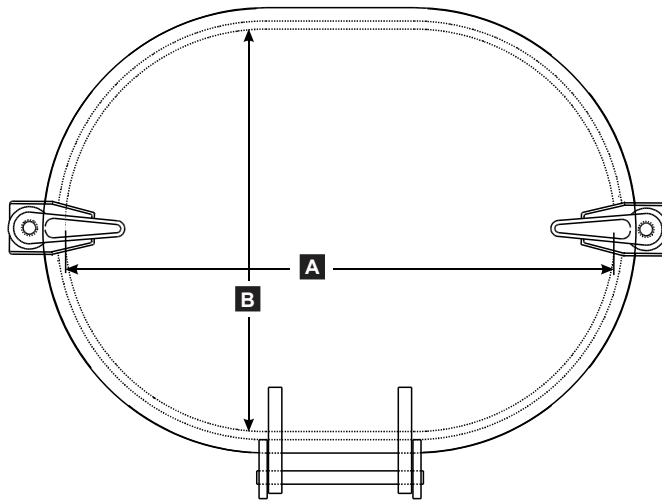
- Standard hardware Bronze Tumble-Bolt, Steel Dog Handle.
- Premium Hardware: Stainless Steel Tumble Bolts, Stainless Steel Dog handles
- Lug Bolts and nuts made from dissimilar metals to prevent galling and corrosion.

Flame screens available upon request (sold separately).

## UMC-774-5



Model Number	Part Number	Description	Clear Opening In. (mm)	Weight Total Lbs (Kgs.)
UMC-774-5	01241-110A	Standard Hardware	15" x 23" (380 x 584)	91 (41)
UMC-774-5 SS-HDWR	01241-110B	Premium Hardware Stainless Steel	15" x 23" (380 x 584)	91 (41)
UMC-774-5 SS	01241-110C	All Stainless Steel Material Stainless Steel Hardware	15" x 23" (380 x 584)	91 (41)



OPTIONAL FLAME SCREEN

Material Index:  
(ST) Steel  
(SS) Stainless Steel  
(BR) Bronze / Brass  
(NR) Nitrile Rubber  
(ZP) Zinc Plated Steel

Model Number	Part Number	A in. (mm)	B in. (mm)	C in. (mm)	1-Cover	2-Coaming	3-Dog Handle	4-Tumble Bolt	5-Gasket	6-Bolt	7-Nut	Flame Screen
UMC-774-5	01241-110A	23.06" (586)	15.06" (383)	5" (127)	01241-106A (ST)	01240-220A (ST)	01240-302A (ST)	01240-207A (BR)	01241-701A (NR)	5/8-11 x 2-1/4 (ZP)	5/8-11 (ZP)	01240-215A (SS)
UMC-774-5-SS HDWR	01241-110B	23.06" (586)	15.06" (383)	5" (127)	01241-106A (ST)	01240-220A (ST)	01240-302C (SS)	01240-207B (SS)	01241-701A (NR)	5/8-11 x 2-1/4 (ZP)	5/8-11 x 2-1/4 (ZP)	01240-215A (SS)
UMC-774-5-SS	01241-110C	23.06" (586)	15.06" (383)	5" (127)	01241-106S (SS)	01240-220B (SS)	01240-302C (SS)	01240-207B (SS)	01241-701A (NR)	5/8-11 x 2-1/4 (SS)	5/8-11 x 2-1/4 (SS)	01240-215A (SS)